

Revisions

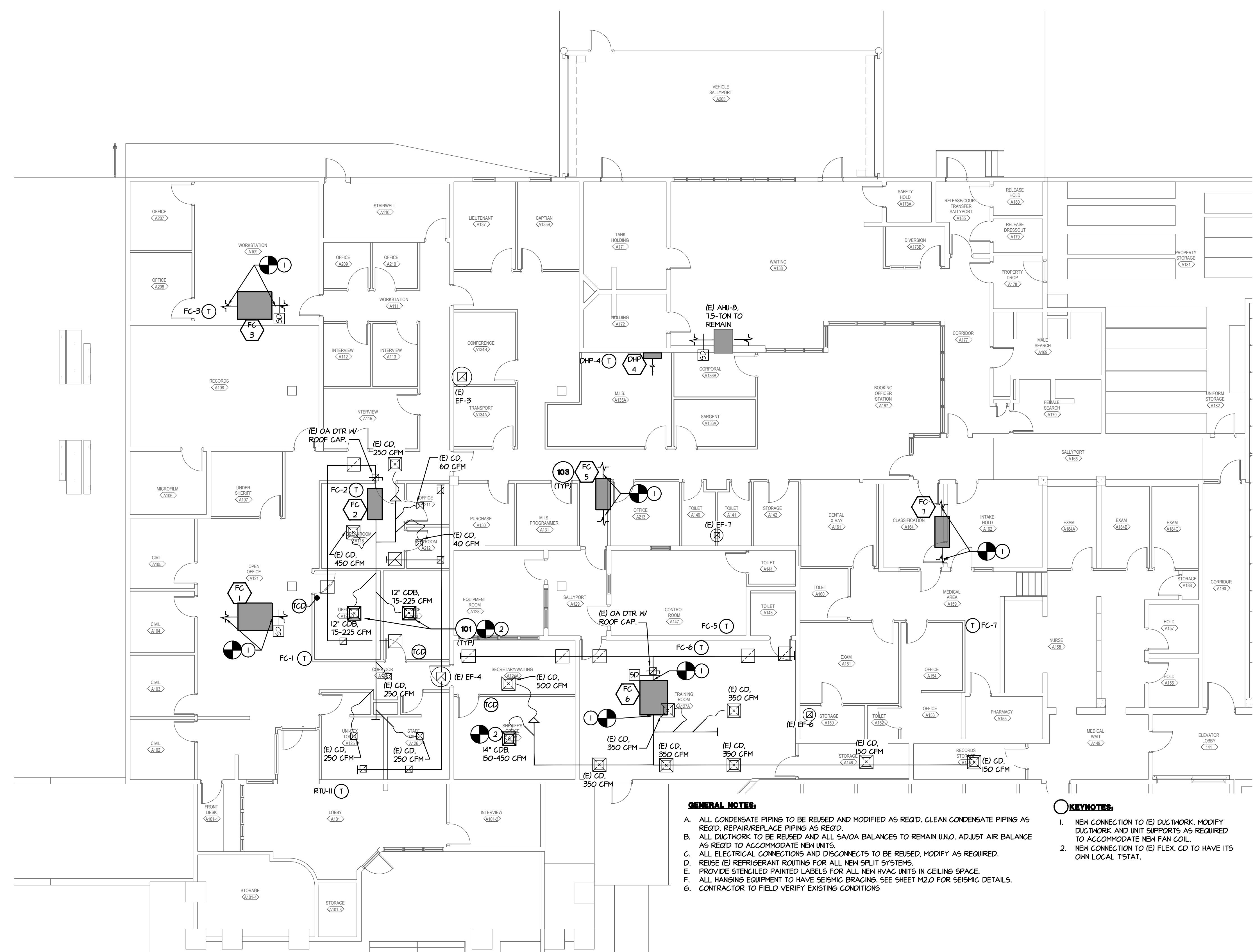
VOICE: (520) 791-2060  
 FAX: (520) 791-2061



**YUMA ADULT DETENTION CENTER HVAC REPLACE**  
 141 S THIRD AVENUE  
 YUMA, AZ 85364  
**MECHANICAL FIRST FLOOR PLAN**

Date: 2/2/24  
 Drawn By: JHB  
 Checked By: PEH  
 Scale: AS NOTED  
 Project Number: 23341  
 Sheet:

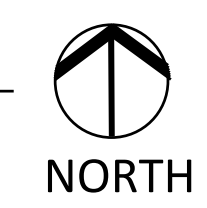
**M1.0**



MECHANICAL LEGEND		
SYMBOL	ABBREV.	ITEM
	R	REFRIGERANT
		FLEX CONNECTION
	SA	SUPPLY AIR DUCT
	RA	RETURN AIR DUCT
	EA	EXHAUST AIR DUCT
	RG	RETURN AIR GRILLE
	CD	SUPPLY AIR CEILING DIFFUSER - LAY-IN CEILING MOUNTED
	CDA	SUPPLY AIR CEILING DIFFUSER - SURFACE MOUNTED
	CDB	SUPPLY AIR CEILING DIFFUSER - KRUEGER MODEL DVD VARIABLE AIRFLOW DIFFUSER. PROVIDE 24X24 LAY-IN CEILING FRAME AND WALL MOUNTED THERMOSTAT. COORDINATE FINISH WITH ARCHITECT.
	EG	EXHAUST GRILLE
	BD	MANUAL BALANCE DAMPER (BUTTERFLY)
		EXISTING FLEX DUCTWORK
	T	THERMOSTAT
	TC	KRUEGER DS0822 DIGITAL CEILING DIFFUSER THERMOSTAT OR EQUAL
	SD	SMOKE DETECTOR
	P.O.C.	POINT OF CONNECTION
	DTR	DUCT THRU ROOF
	DTM	DUCT THRU WALL
	SA	SUPPLY AIR
	RA	RETURN AIR
	EA	EXHAUST AIR
	TA	TRANSFER AIR
	OA	OUTSIDE AIR
	(E)	EXISTING FLEX OR ROUND DUCTWORK
	DN	DOWN
	CLG	CEILING
	TV	TURNING VANES
	ABV	ABOVE
	OH	OVERHEAD
	BLW	BELOW
	AFF	ABOVE FINISHED FLOOR
	C.D.	CONDENSATE DRAIN CLEAN OUT
	OBD	OPPOSED BLADE DAMPER
	UNO.	UNLESS NOTED OTHERWISE

NOTE: SOME OF THE ITEMS MAY NOT APPLY TO THIS PROJECT.

**MECHANICAL FIRST FLOOR PLAN**  
 SCALE: 1/8" = 1'-0"

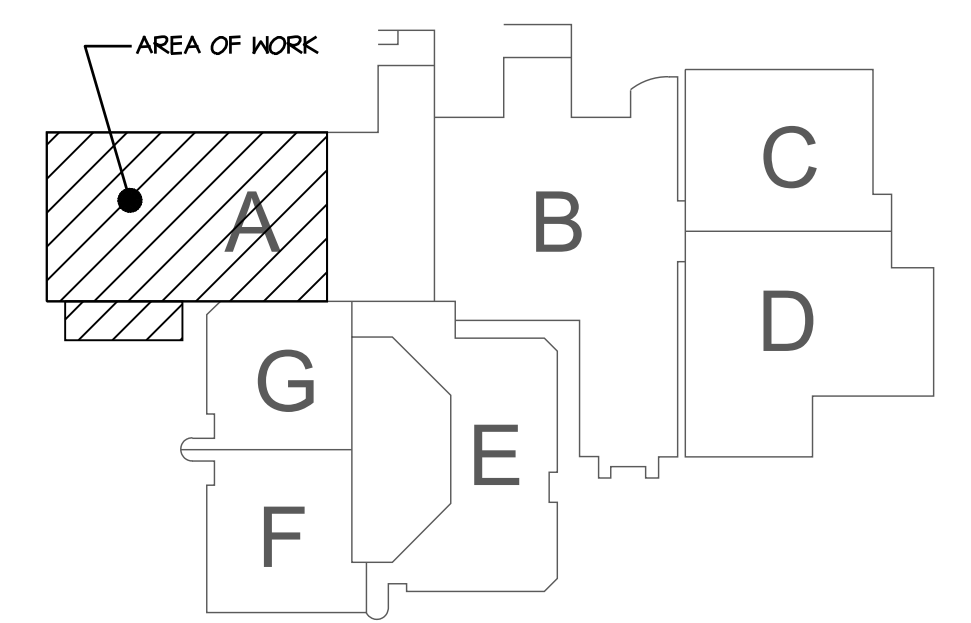


**GENERAL NOTES:**

- ALL CONDENSATE PIPING TO BE REUSED AND MODIFIED AS REQ'D. CLEAN CONDENSATE PIPING AS REQ'D. REPAIR/REPLACE PIPING AS REQ'D.
- ALL DUCTWORK TO BE REUSED AND ALL SA/OA BALANCES TO REMAIN UNO. ADJUST AIR BALANCE AS REQ'D TO ACCOMMODATE NEW UNITS.
- ALL ELECTRICAL CONNECTIONS AND DISCONNECTS TO BE REUSED, MODIFY AS REQUIRED.
- REUSE (E) REFRIGERANT ROUTING FOR ALL NEW SPLIT SYSTEMS.
- PROVIDE STENCILED PAINTED LABELS FOR ALL NEW HVAC UNITS IN CEILING SPACE.
- ALL HANGING EQUIPMENT TO HAVE SEISMIC BRACING. SEE SHEET M2.0 FOR SEISMIC DETAILS.
- CONTRACTOR TO FIELD VERIFY EXISTING CONDITIONS

**KEYNOTES:**

- NEW CONNECTION TO (E) DUCTWORK. MODIFY DUCTWORK AND UNIT SUPPORTS AS REQUIRED TO ACCOMMODATE NEW FAN COIL.
- NEW CONNECTION TO (E) FLEX CD TO HAVE ITS OWN LOCAL TSTAT.



**KEYPLAN**  
 NTS

