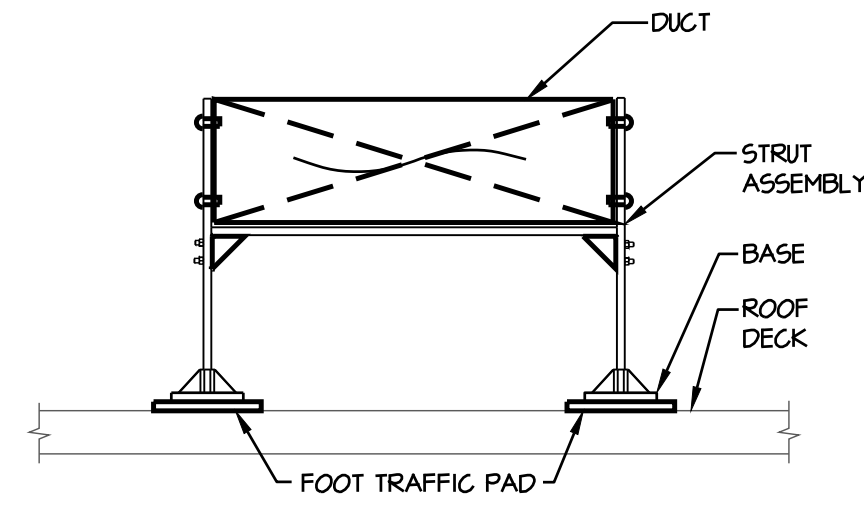


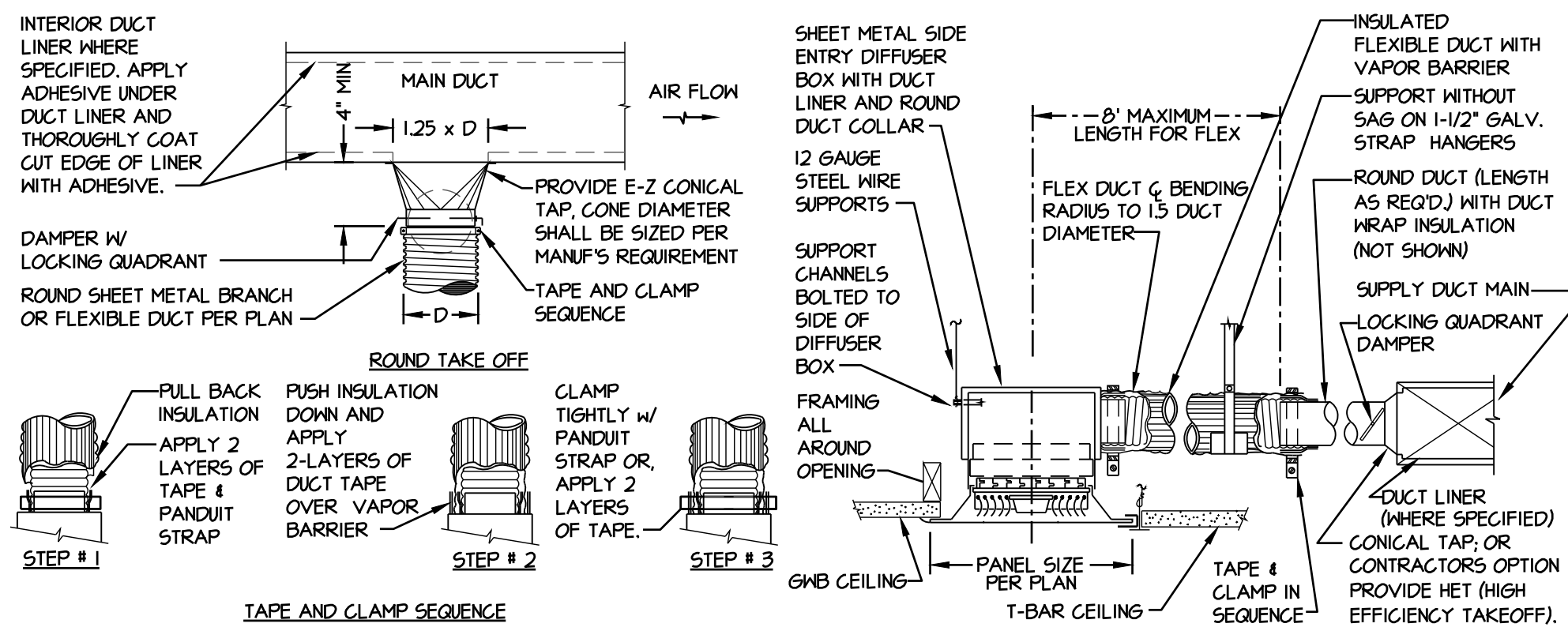
- NOTE:
- SPACE SUPPORT MAX 8' O.C.
  - PROVIDE DUCT SUPPORTS, ONE SUPPORT ON EACH SIDE, AT ALL CHANGES IN DIRECTION.
  - MIRO DUCT SUPPORT MODEL 6-DS OR EQUAL.



**ROOFTOP DUCT SUPPORT**

N.T.S.

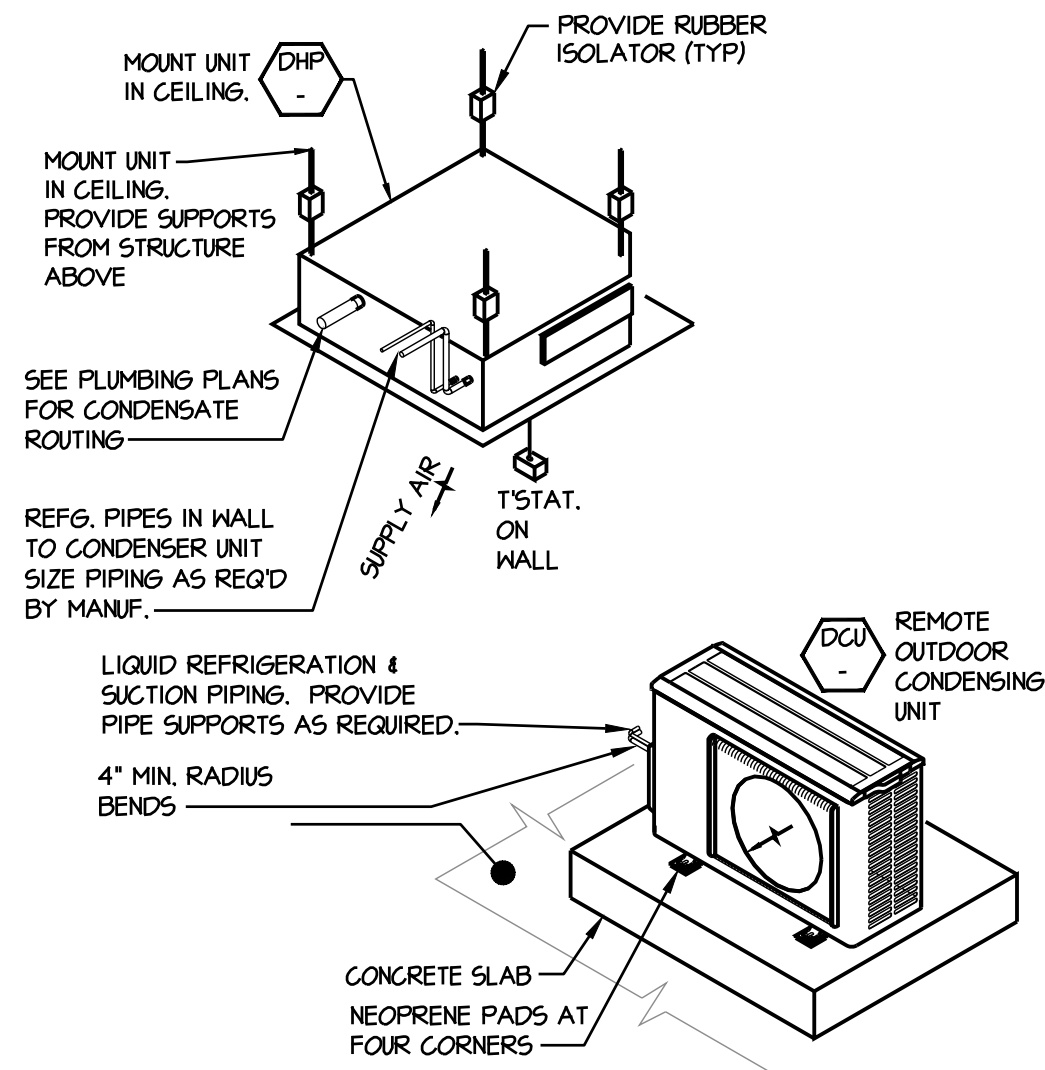
102



**CEILING DIFFUSER AND FLEXIBLE DUCT DETAIL**

N.T.S.

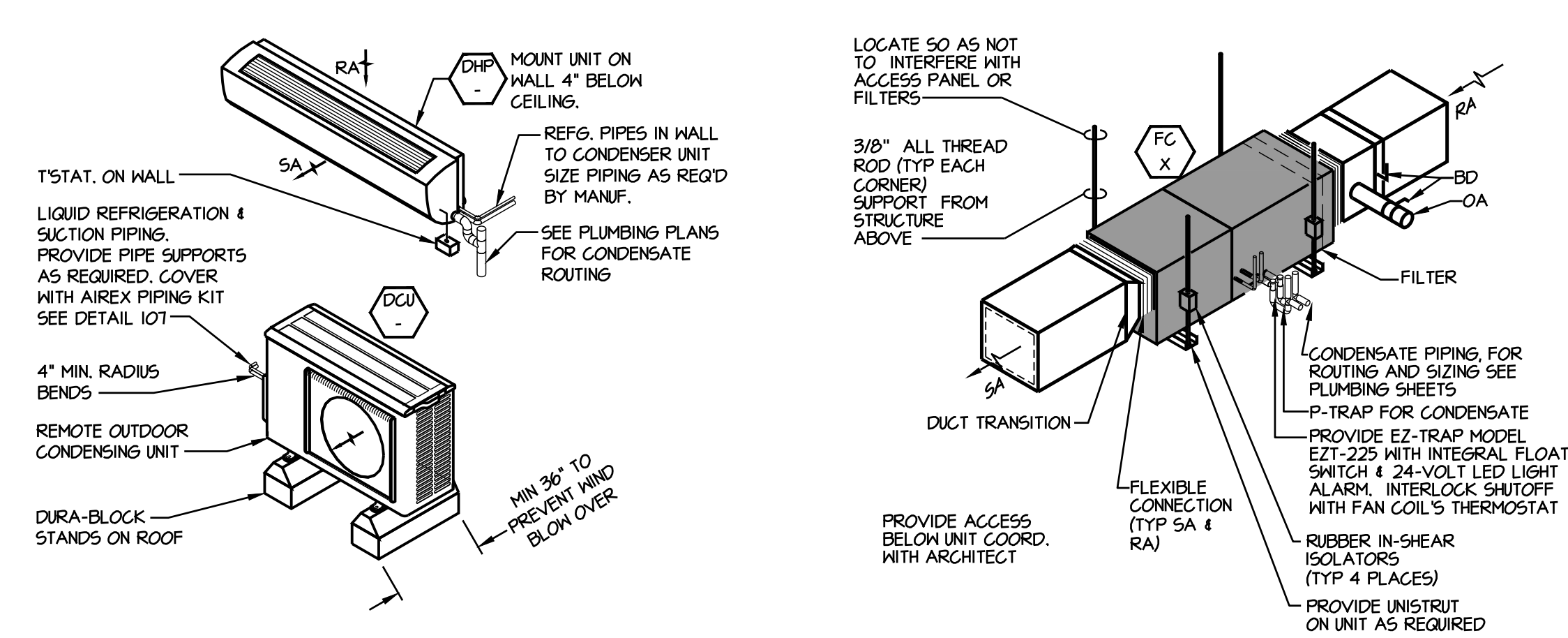
101



**DUCTLESS AIR CONDITIONER SPLIT SYSTEM DETAIL**

N.T.S.

105



**FAN COIL DETAIL (HORIZ)**

N.T.S.

103

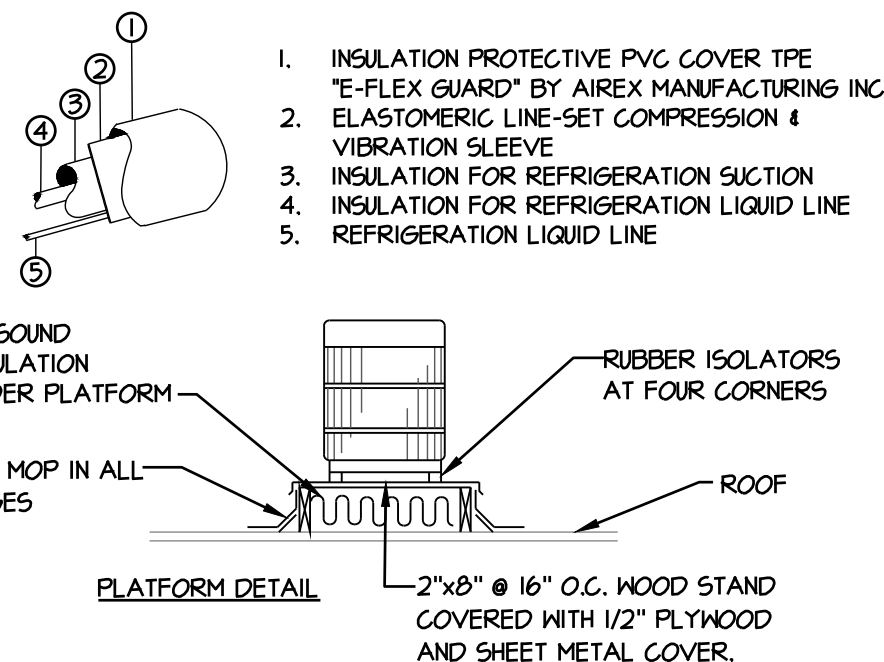
**DUCTLESS AIR CONDITIONER SPLIT SYSTEM DETAIL**

N.T.S.

104

- NOTES:
- ALLOW 24" CLEARANCE TO SERVICE END OF UNIT, 48" ABOVE UNIT, 6" ON ONE SIDE, 12" ON REMAINING SIDE, AND 24" BETWEEN UNITS FOR PROPER AIRFLOW.

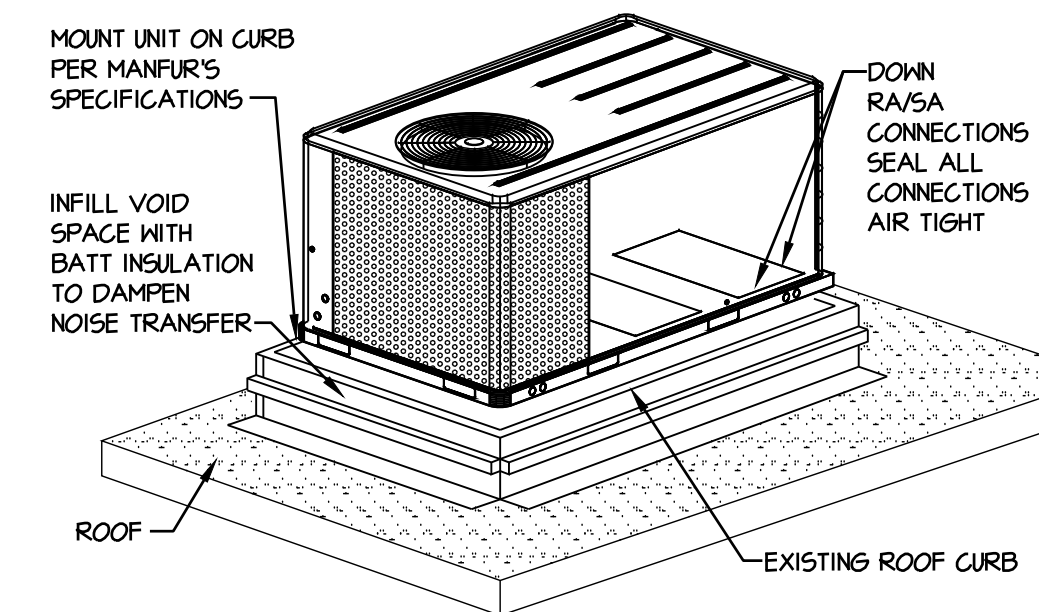
- REFRIGERANT LINE SIZES AND CONNECTIONS PER MANUFACTURER. MECHANICAL CONTRACTOR TO FIELD ROUTE. REFRIGERANT LINES PER MANUFACTURER'S RECOMMENDATIONS. (TYPICAL FOR ALL UNITS.)
- ALL REFRIGERANT PIPING SHALL BE INSULATED. ALL EXPOSED PIPING SHALL BE PROVIDED WITH AIREX PIPING KIT.
- REFRIGERANT LINES EXCEEDING MANUFACTURER'S MAXIMUM LENGTH AND VERTICAL DIFFERENTIAL SHALL COMPLY WITH MANUFACTURER'S LONG-LINE APPLICATION GUIDELINES.



**CONDENSING UNIT DETAIL**

N.T.S.

107



**PACKAGED ROOF TOP UNIT DETAIL**

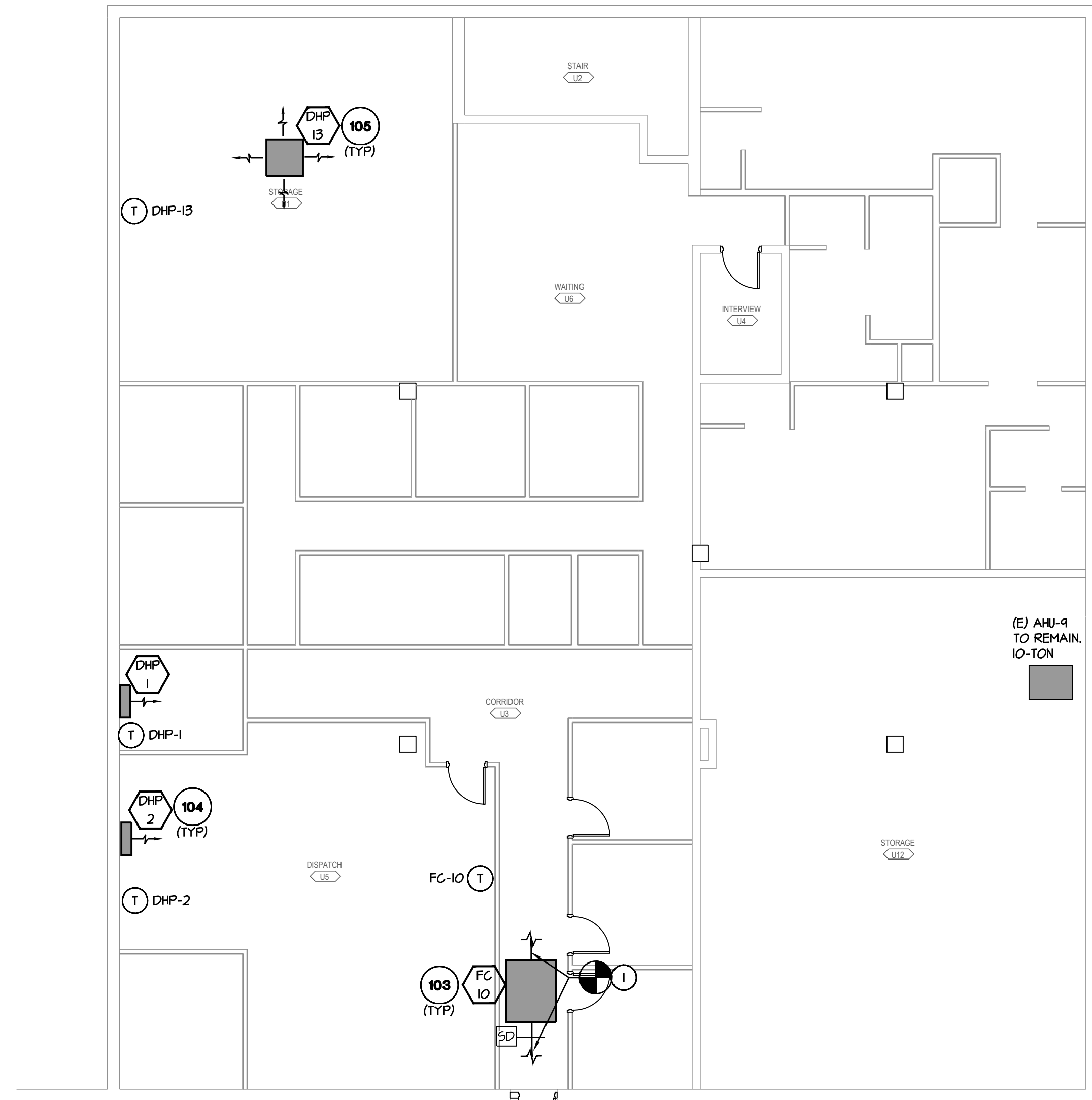
N.T.S.

106

**ENERGY RECOVERY VENTILATOR DETAIL**

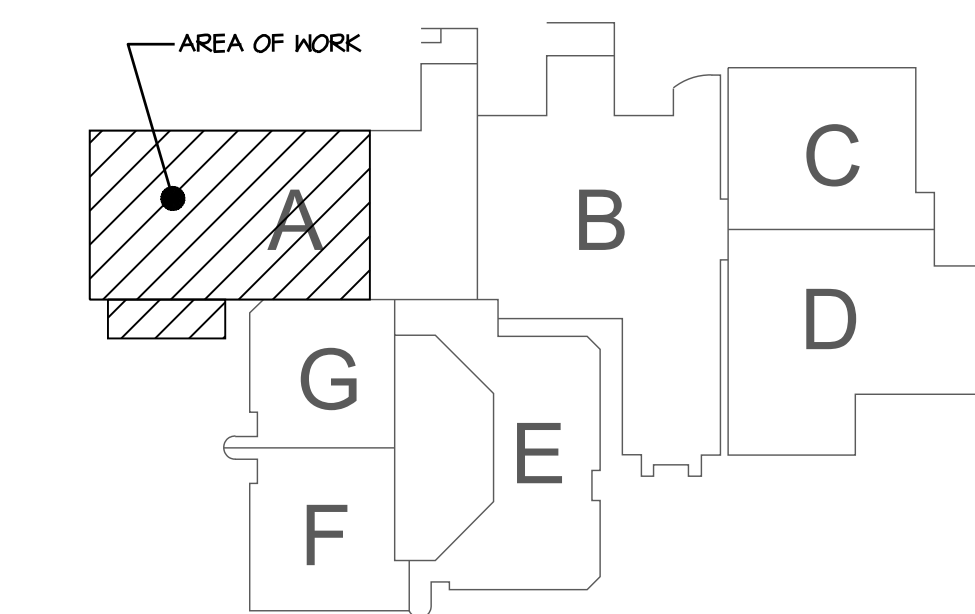
N.T.S.

108



- GENERAL NOTES:**
- ALL CONDENSATE PIPING TO BE REUSED AND MODIFIED AS REQ'D. CLEAN CONDENSATE PIPING AS REQ'D. REPAIR/REPLACE PIPING AS REQ'D.
  - ALL DUCTWORK TO BE REUSED AND ALL SA/OA BALANCES TO REMAIN UNO. ADJUST AIR BALANCE AS REQ'D TO ACCOMMODATE NEW UNITS.
  - ALL ELECTRICAL CONNECTIONS AND DISCONNECTS TO BE REUSED, MODIFY AS REQUIRED.
  - REUSE (E) REFRIGERANT ROUTING FOR ALL NEW SPLIT SYSTEMS.
  - PROVIDE STENCILED PAINTED LABELS FOR ALL NEW HVAC UNITS IN CEILING SPACE.
  - ALL HANGING EQUIPMENT TO HAVE SEISMIC BRACING. SEE SHEET M2.0 FOR SEISMIC DETAILS.
  - CONTRACTOR TO FIELD VERIFY EXISTING CONDITIONS.
- KEYNOTES:**
- NEW CONNECTION TO (E) DUCTWORK. MODIFY DUCTWORK AND UNIT SUPPORTS AS REQUIRED TO ACCOMMODATE NEW FAN COIL.

**MECHANICAL BASEMENT PLAN**  
SCALE: 1/8" = 1'-0"

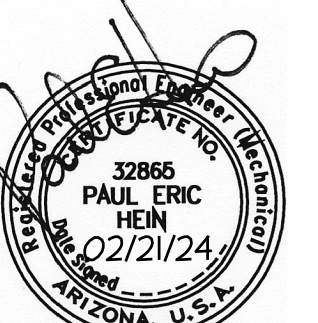


**KEYPLAN**  
NTS



Revisions


VOICE: (520) 731-2060  
FAX: (520) 731-2061



**YUMA ADULT DETENTION CENTER HVAC REPLACE**  
141 S THIRD AVENUE  
YUMA, AZ 85364  
**MECHANICAL BASEMENT PLAN**

Date: 2/2/24  
Drawn By: JHB  
Checked By: PEH  
Scale: AS NOTED  
Project Number: 23341  
Sheet:

**M1.1**